

TRIPPAS WHITE GROUP



ICONIC
VENUES

Venue Portfolio

A look into Trippas White Group's iconic venues and on-site initiatives.

[Sydney Opera House >](#)

[Taronga Zoo >](#)

[Centennial Homestead >](#)

[Queens Park Kitchen >](#)

[Botanic House >](#)

[Terrace on the Domain >](#)

[Reign at the QVB >](#)

[ESQ Bar + Dining >](#)

[Infinity Sydney Tower >](#)

[SkyFeast Sydney Tower >](#)

[Bar 83 Sydney Tower >](#)

[The Lookout Echo Point >](#)

[Australian War Memorial >](#)

[National Gallery of Australia >](#)

[Australian Institute of Sport >](#)

[Mary Mae's Bar & Kitchen >](#)



Contents

SYDNEY	
Sydney Opera House	5
Taronga Zoo	7
Centennial Homestead	9
Queens Park Kitchen	11
THE GARDENS	
Botanic House	15
Terrace on the Domain	17
SYDNEY CBD	
Reign at the QVB	21
ESQ Bar & Dining	23
Infinity at Sydney Tower	25
SkyFeast at Sydney Tower	27
Bar 83 at Sydney Tower	29
GREATER SYDNEY	
The Lookout Echo Point	33
CANBERRA	
Australian War Memorial	37
National Gallery of Australia	39
Australian Institute of Sport	41
BRISBANE	
Mary Mae's Bar & Kitchen	43
Weddings, Social & Corporate Events	45
Indigenous Engagements	47
Sustainability Focus	49
Capacities	51



SYDNEY



SYDNEY OPERA HOUSE

Surrounded by picturesque views, the Sydney Opera House is Australia's most iconic building – home to an array of unique event spaces, including the most sought after venue, The Yallamundi Rooms.

Trusted to operate within these hallowed walls, our dedicated event specialists work hard to create the most memorable experiences at Sydney's most treasured venue.

Yallamundi Rooms	🍷 400	🍴 180
Utzon Room	🍷 200	🍴 100
Concert Hall Foyer	🍷 1000	🍴 500
Joan Sutherland Theatre Foyer	🍷 700	🍴 200

sydneyoperahouse.com



Dalang Ballroom	🍷 300	🍽️ 250
N'Galawa Terrace	🍷 200	🍽️ 150
Gili Rooftop	🍷 80	🍽️ 60

TARONGA ZOO

Set within 28 hectares of spectacular Sydney Harbour foreshore offering several extraordinary meeting and event spaces and unique outdoor locations that boast the most magnificent views over the Sydney city skyline, Harbour Bridge and Opera House.

Whether an intimate cocktail affair for 60 guests, a grand gala dinner for 200, or an outdoor festival for 1000, Taronga Zoo is a superb setting and an exceptional location for your next event.





CENTENNIAL HOMESTEAD

Centennial Homestead is set in the heart of Sydney's Centennial Park, boasting an elegant dining room, sundrenched decks, outdoor terraces, floor-to-ceiling windows, a rooftop bar, and unsurpassed views over rolling green lawns.

With capacity for cocktail parties up to 900 guests and seated events for up to 380, Centennial Homestead can accommodate almost any style of event, making it one of Sydney's most flexible and adaptable venues.

The Paddock	🍷 320	🍴 220
The Paddock & Oakroom	🍷 550	🍴 380
Wisteria Room	🍷 300	🍴 200
Whole Venue	🍷 900	🍴 380

centennialhomestead.com.au
@thecentennialhomestead



QUEEN'S PARK KITCHEN

Queens Park Kitchen is a relaxed location to escape the chaos of the CBD and enjoy the beauty and magic of Sydney's biggest backyard.

The rustic and casual space offers the option for exclusive use up to 50 guests. QPK can host your next corporate function, social occasion or children's party.

¥ 70 A 50

queensparkkitchen.com.au

@queensparkkitchen





THE GARDENS



BOTANIC HOUSE

Hidden amongst the stunning foliage of the Royal Botanic Garden Sydney, Botanic House offers a garden escape with the convenience of a city location. With an expansive open plan space streaming with natural light and glimpses of stunning Sydney Harbour, Botanic House is perfect for any type celebration from small and intimate to large and extravagant.



Farm Cove Eatery

Located downstairs from Botanic House, Farm Cove Eatery is available for intimate, smaller-scale evening events such as birthday parties, engagement parties, christenings & corporate events.

The space can also be utilized to add another dimension to your event at Botanic House. From arrival drinks to a dedicated dancefloor or afterparty destination, the two spaces can be used in tandem to create an unforgettable and multi-layered experience for your guests.

Botanic House	🍷 250	🍴 150
Farm Cove	🍷 100	🍴 50

botanichouse.com.au
@botanichousesydney



TERRACE ON THE DOMAIN

Surrounded by rolling greens lawns with views of the iconic Sydney skyline, Terrace on the Domain offers a leafy park oasis with the convenience of a city location. Nestled seamlessly into the lush garden surrounds the vast glass windows bathe the venue in natural light.

The light filled lawns and sundrenched outdoor terraces surrounding the venue also provide an option to create a multilayered event experience for your guests – think pre-dinner drinks before moving inside for the main event or team building exercises on the lawn post conference.



🍷 325 ₳ 180

terraceonthedomain.com.au
@terraceonthedomain



THE CITY

REIGN AT THE QVB

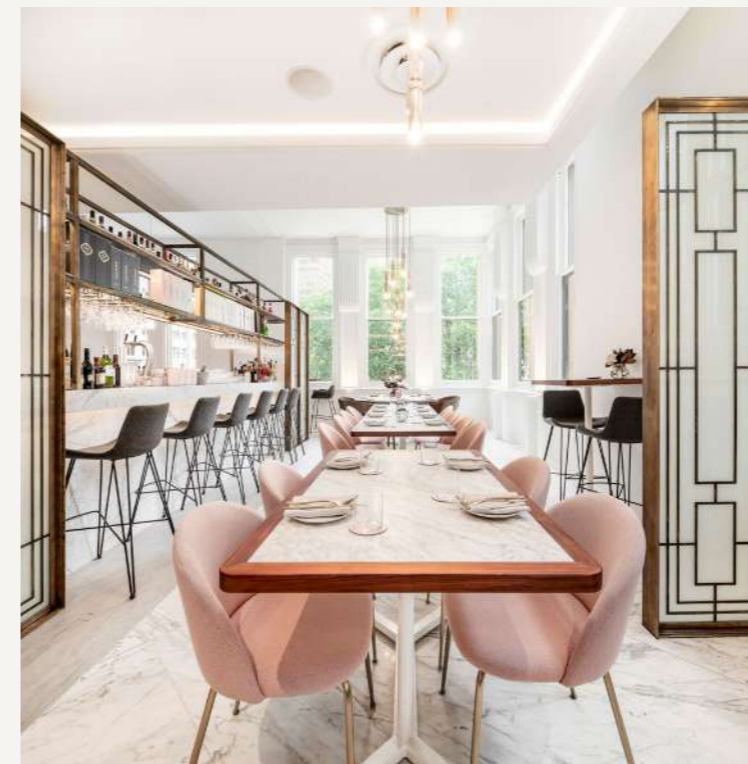
Located on level one of the iconic Queen Victoria Building, Reign is Sydney's new premium Champagne Parlour & Bar. Set amongst lush marble, brass and soft musk tones, and framed by a Romanesque arch window overlooking Town Hall, this is where Sydney's monarchy comes out to play.



Featuring an extensive beverage menu of 150 Champagnes and sparkling wines, curated artisan cocktails and some of the best sips by the glass - there is a tittle to suit everyone's tastes, all to be paired with Reign's seasonally-driven share plates. Whatever the occasion, Reign has you royally covered.

🍷 140 ₳ 85

reignattheqvb.com.au
[@reignattheqvb](https://www.instagram.com/reignattheqvb)





ESQ BAR + DINING

Set behind a hidden entrance in the Queen Victoria Building, ESQ will transport diners back in time to the prohibition era with vintage styling, smooth jazz, swing bands, custom-made cocktails and a speakeasy-inspired menu.

Relish in ESQ's alluring old-world glamour over a long lunch, post-show drink or midnight feast. A dark, oak bar framed with mosaic and parquetry flooring, soft leather seating and sensuous low lights all make the most of the QVB's historical Romanesque revival architecture. A haven for business or pleasure.

🍸 140 ₳ 85

esqatqvb.com.au
[@esqattheqvb](https://www.instagram.com/esqattheqvb)



INFINITY SYDNEY TOWER



Set amongst an unmistakably stylish setting, with incredible revolving views of the city skyline and harbour, Infinity at Sydney Tower embodies the quintessential Australian dining experience.

Endless possibilities. Endless views. Welcome to Infinity.

Located on Level 1 of Sydney Tower, 81 floors above the Sydney CBD.

₳ 95

infinitysydneytower.com.au
@infinitysydneytower



SKYFEAST SYDNEY TOWER

SkyFeast at Sydney Tower, Sydney's favourite sky-high buffet offers an extensive banquet-style dining experience with uninterrupted revolving views of the city.

Celebrating diverse cultures and authentic flavours, with more than 50 freshly-prepared dishes on offer, guests can sample food from a range of cuisines including succulent fresh seafood, modern Australian, Italian, Chinese, Japanese and Thai. A feast for the senses awaits.



A 115

skyfeastsydneytower.com.au
#skyfeastsydneytower

BAR 83 SYDNEY TOWER

Bar 83 soars 83 levels above the city CBD, located in the iconic Sydney Tower.

A striking décor, with subtle hints of retro nostalgia and spectacular floor-to-ceiling windows, affords sky-high revellers a 260-degree view of Sydney's glittering cityscape.

Bold specialty cocktails, delectable bar fare and attentive table service come together for an experience set to match the view. Play your way. The sky is yours.



🍸 140

bar83sydneytower.com.au
[@bar83sydneytower](https://www.instagram.com/bar83sydneytower)

THE BLUE MOUNTAINS



THE LOOKOUT ECHO POINT



With an expansive event space perfect for corporate and social functions, The Lookout Echo Point offers both cocktail style packages, sit down dinners and other flexible event options.

Seating up to 300 standing and 150 seated, The Lookout Echo Point is the quintessential Australian destination.

🍷 250 🍴 150

thelookoutechopoint.com.au
[@thelookoutechopoint](https://www.instagram.com/thelookoutechopoint)

CANBERRA





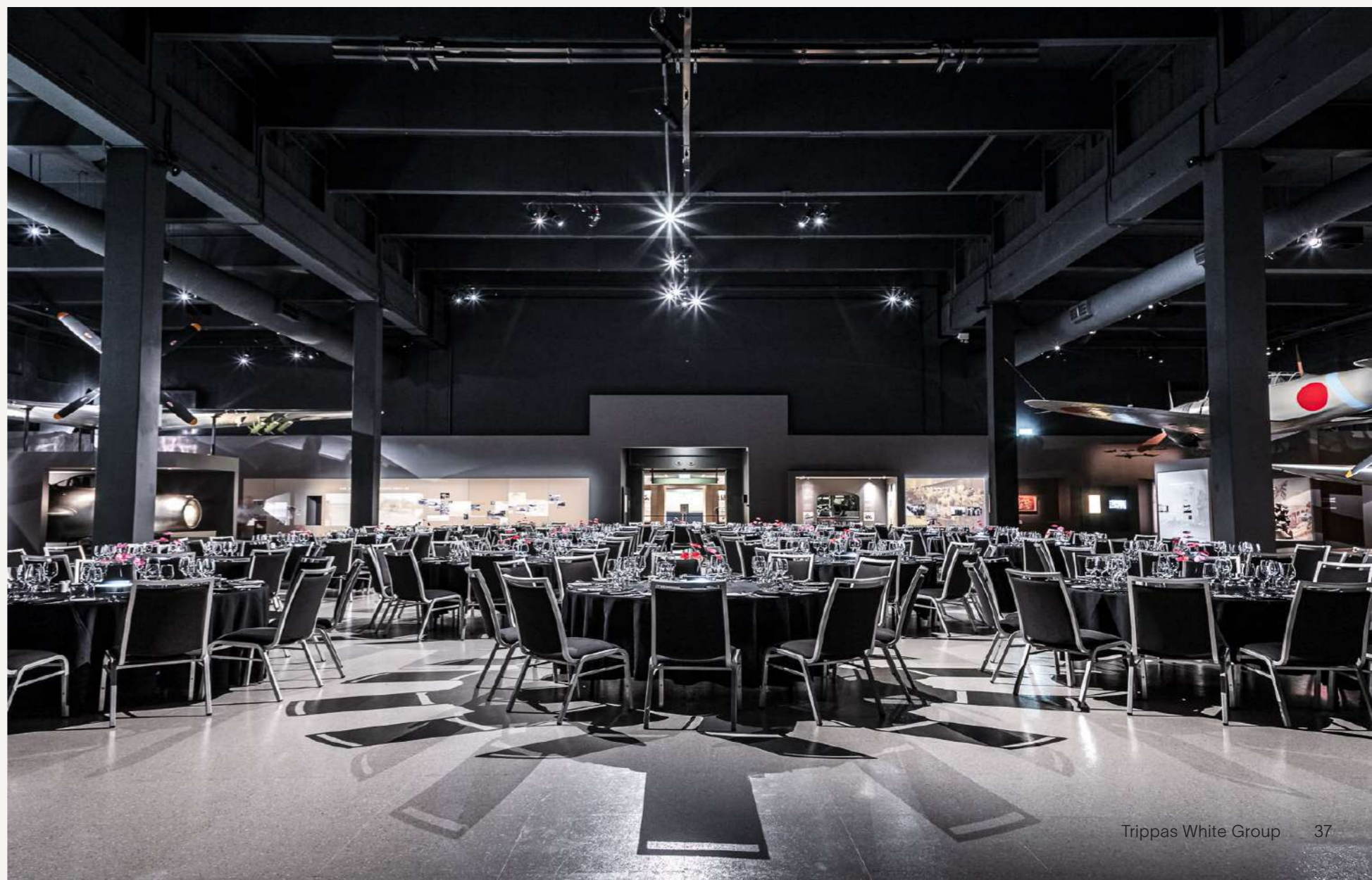
Poppy's Cafe	🍷 160	🛋️ 140
Theatre		🛋️ 245
Conference	🍷 220	🛋️ 180
Anzac Atrium	🍷 500-700	🛋️ 350-400
Atrium Cafe		🛋️ 200

AUSTRALIAN WAR MEMORIAL

The Australian War Memorial is unique among the world's war memorials, offering a collection, museum and shrine.

With sweeping views over Canberra and a direct view along Anzac Parade across Lake Burley Griffin to Parliament House, the Memorial is considered one of Australia's most important treasures.

Offering premium spaces for seated and cocktail events, as well as a first-class theatrette, this important venue is the perfect setting for something truly spectacular and out of the ordinary.





NATIONAL GALLERY OF AUSTRALIA

The National Gallery boasts distinctive venues that serve as exceptional and versatile settings for a wide range of events. From elegant gala dinners and stylish cocktail parties to productive conferences and intimate workshops, as well as private functions, our venues cater to diverse needs and preferences.

Among these venues are the prestigious Gandel Hall, exuding grandeur and sophistication, the enchanting Sculpture Garden Pavillion, a permanent outdoor marquee nestled amidst the gallery's lush gardens, the newly-refurbished James Fairfax Theatre, and the inviting Gallery Dining Room. Each venue offers its own unique ambiance and charm, providing the perfect backdrop for your event.

Gandel Hall	🍷 900	🏠 350
Members Lounge	🍷 100	🏠 80
Level 1 Foyer	🍷 300	
Dining Room	🍷 200	🏠 135
James Fairfax Theatre		🏠 264
Sculpture Garden Pavillion	🍷 180	🏠 90



AUSTRALIAN INSTITUTE OF SPORT

MEET AND HOST EVENTS AT AUSTRALIA'S PREMIER SPORTING ATTRACTION

The Australian Institute of Sport (AIS) is Canberra's ultimate destination for world-class events. The AIS offers 9 versatile venues, with modern facilities and dedicated event services to make your occasion unforgettable.

From intimate gatherings to grand galas, the AIS combines history, prestige, and functionality. Highlights include the AIS Arena, Canberra's largest indoor multi-purpose venue, capable of hosting up to 4,200 theatre-style guests and 900 banquet-style for dinners. The Marathon Room provides a more intimate setting, ideal for workshops, luncheons, and cocktail receptions.



AREA	THEATRE	CABARET	BANQUET	COCKTAIL	CLASSROOM	U-SHAPE
AIS Arena	4200*	720	900	900	450	
Charlesworth Theatrette	314					
Gold Room	120	60	120	150	60	45
Silver Room	80	40	60	60	40	24
Bronze Room	40	27	40	40	27	24
AIS Visitor Centre				400		
AIS Visitor Centre Theatrette	69					
Marathon Room	70	140	140	250	30	24
Relay Room	20	10	40	24	10	10





BRISBANE



MARY MAE'S

With riverfront views, sundrenched spaces and room for 10 – 300 guests, events at Mary Mae's at Brisbane Powerhouse will set the scene for your next function.

With both private dining rooms and larger event spaces, Mary Mae's offers menus and spaces for weddings, product launches, conferences, work parties and large scale events like Christmas and New Year's Eve.

🍷 300 🍸 200

marymaes.com.au
[@marymaesbrisbane](https://www.instagram.com/marymaesbrisbane)

Weddings

With city, waterfront and garden locations across Australia, Trippas White Group has a number of venues to suit all weddings.

Boasting intimate spaces to large and lavish venues, get in touch with one of our experienced events managers to discuss your perfect venue and how we can be a part of your special day.



Social & Corporate

Trippas White Group provides exclusive hospitality services to a host of well-known and respected organisations in the airline, education and healthcare industries.

From boardroom hospitality to outdoor events, our hospitality team bring the same level of exceptional service and high quality food and beverage for which our iconic restaurants are renowned, direct to you!

Indigenous Engagement

TWG prioritises meaningful engagement with Indigenous communities, embedding cultural respect into its operations



Reflect Reconciliation Action Plan (RAP)

- TWG's RAP outlines concrete steps to promote reconciliation and Indigenous participation.
- Increasing Indigenous representation in the workforce up to 3% within the next couple of years across all our venues and outlets.
- Supporting Indigenous suppliers through partnerships with organisations like Supply Nation.
- Incorporating Indigenous perspectives into decision-making processes.

Indigenous Ambassador

Dwayne Bannon-Harrison serves as TWG's Indigenous ambassador, ensuring authenticity and cultural sensitivity in all initiatives.

Commitment to Action

TWG's collaboration with its Indigenous ambassador and dedication to its RAP reflect its commitment to Indigenous engagement and reconciliation.



Journey of Unity: Nurturing Connections with Trippas White Group
Artist: Lani Balzan

Sustainability Focus

Plan, Measure, Offset: The Butterfly Effect of Greener Events with TWG & Barefoot Citizens Consulting

More and more companies are creating goals to ensure all their bigger activities and events are in line with their carbon offset goals.

Hence we have as a company collaborated with **Barefoot Citizens Consulting** that can assist with:

- **Design ESG Messaging:**
Craft compelling ESG messages for your business.
- **Measure and Report Carbon Footprints:**
Accurately track your event's carbon footprint.
- **Offset and Reduce Emissions:**
Get expert advice to offset or reduce your event's emissions.

Learn More how you can create a more Carbon Neutral Event- Contact Barefoot Citizens Consulting today!

www.barefootcitizensconsulting.com

TWG integrates environmental responsibility into its core practices, striving for sustainable operations.

Utilising GreenSpace

TWG is committed to sustainability by transforming unused indoor and outdoor spaces into dynamic urban gardens. This initiative not only beautifies our surroundings but also provides fresh produce, aligning with our commitment to sustainability and local sourcing.

Collaborating with Local Producers

At TWG, we prioritise collaborating with local producers to ensure the highest quality ingredients while supporting regional talent and resources.

TWG's sustainability efforts, focusing on six key areas

1. Environment
2. Ethical Operations and Responsible Procurement
3. Local and Sustainable Food
4. Cultural Awareness
5. Community Engagement
6. Safety, Health, and Wellbeing

Key Sustainability Targets

TWG is committed to ambitious sustainability goals, including:

- 100% compostable or recyclable packaging.
- Transitioning to green energy providers.
- Recycling glass, plastics, paper, and cardboard at every venue.
- Aiming for a 25% reduction in organic waste annually.



Venue Capacities



EVENT SPACE	COCKTAIL	DINING	THEATRE	CABARET
-------------	----------	--------	---------	---------

Sydney

SYDNEY OPERA HOUSE				
Yallamundi Rooms	350	180	200	120
Utzon Room	200	100	150	-
Concert Hall Foyer	1,000	500	-	-
Joan Sutherland Theatre Foyer	700	200	-	-
TARONGA ZOO				
Dalang Ballroom	300	250	250	160
N'Galawa Terrace	200	150	150	132
Gilli Rooftop	80	60	80	48
SYDNEY TOWER				
Infinity at Sydney Tower	-	95	-	-
SkyFeast at Sydney Tower	-	115	-	-
Bar 83 at Sydney Tower	170	-	-	-
REIGN AT THE QVB				
Entire Venue (exclusive capacities)	140	100	-	-
ESQ BAR & DINING				
Entire Venue (exclusive capacities)	140	100	-	-
BOTANIC HOUSE				
Restaurant (upstairs)	250	150	100	80
Farm Cove Eatery (downstairs)	100	50	-	-
TERRACE ON THE DOMAIN				
Entire Venue	325	180	120	100

Greater Sydney

CENTENNIAL HOMESTEAD				
The Paddock	320	220		
The Paddock & Oakroom	550	380		
Wisteria Room	300	200	-	-
Whole Venue	900	380		
QUEENS PARK KITCHEN				
Entire Venue	70	50	-	-
THE LOOKOUT ECHO POINT				
Function Space	250	150	-	-

EVENT SPACE	COCKTAIL	DINING	THEATRE	CABARET
-------------	----------	--------	---------	---------

Brisbane

MARY MAE'S				
The Dining Room	80	60	60	-
Sun Room	120	100	-	-
The Lounge	45	35	35	-
The Observation Deck	70	40	-	-
Entire Venue	300	200	-	-

Canberra

AUSTRALIAN WAR MEMORIAL				
Poppy's Cafe	160	140	-	-
Theatre	-	-	245	-
Conference	220	180	-	-
Anzac Atrium	500-700	340-400	-	-
Atrium Cafe		200		
NATIONAL GALLERY OF AUSTRALIA				
Gandel Hall - 1 Room	300	110		
Gandel Hall - 2 Room	600	220		
Gandel Hall - 3 Room	900	350		
Members Lounge	100	80		
Level 1 Foyer	300	-		
Dining Room	200	135		
James Fairfax Theatre	-	-	264	
Sculpture Garden Pavillion	180	90		

AUSTRALIAN INSTITUTE OF SPORT						
EVENT SPACE	THEATRE	CABARET	BANQUET	COCKTAIL	CLASSROOM	U-SHAPE
AIS Arena	4200*	720	900	900	450	-
Charlesworth Theatre	314	-	-	-	-	-
Gold Room	120	60	120	150	60	45
Silver Room	80	40	60	60	40	24
Bronze Room	40	27	40	40	27	24
AIS Visitor Centre	-	-	-	400	-	-
AIS Visitor Centre Theatre	69	-	-	-	-	-
Marathon Room	70	140	140	250	30	24
Relay Room	20	10	40	24	10	10

Let us create your
next iconic moment

TRIPPAS WHITE GROUP

P: 1300 306 932

E: events@trippaswhitegroup.com.au

trippaswhitegroup.com.au